

# BLUEBIRD<sup>®</sup> AUTO RENTAL SYSTEMS

NEW YORK • TORONTO • LONDON • DUBAI

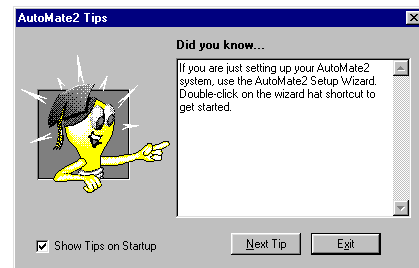
## RentWorks Version 3.0 Service Pack 2 Release Letter May, 2003

The following *significant* changes appear in Service Pack 2. Note that the installation of this Service Pack **will require** a Feature Code.

1. Effective with the introduction of this Service Pack, “AutoMate2” as well as “BlueStar” will now be known as “**RentWorks**”. Our new name better reflects the fact that the software encompasses a full suite of products – and reduces confusion with respect to version numbers!
2. A Setup Wizard has been added for easy setup of the basic records that are needed.



3. Tips have been integrated with RentWorks, providing hints and shortcuts.



4. ProcessWare Financials: With this Service Pack, we have allowed a low-level (one-way) integration with the new ProcessWare Financials (similar to how we currently interface with Quickbooks). Written in Progress, Processware has the capability to drill-down from General Ledger into RentWorks in future releases.
5. PPGen (Print Program Generator): Images and colors can now be incorporated into rental agreements created with PPGen. Printing is done with the Windows print driver, so any Windows-compatible printer can now be used as long as it resides on the server.

6. E-Rez2: The latest enhancements with e-rez2 include the ability to flag which miscellaneous charges and coverages should appear on the web site, and Total Pricing capability (estimated charges include these extra charges plus all applicable taxes and fees).
7. Government Administrative Rate Supplement (GARS) Fee: Support for the GARS Fee has been fully implemented so that the fee is automatically assessed based on criteria established by franchisors. This has been achieved by the use of a new GARS table, which prompts for a Type, Value, and Miscellaneous Charge Code. If you select "Rate Category" as the Type, enter for the Value the rate code used to identify a corporate reservation as a government rental. If you select "Local Company" as the Type, select for the Value the Local Company which qualifies as a government rental.

Reservation Link has also been enhanced to add the fee to transmitted reservations.

8. Dollar Speed of Service: Dollar franchisees can connect to Dollar Speed Of Service to receive reservations and lookup a renter's information from a central database.
9. Required Deposit: Four different choices are available for a required deposit: None, Estimated Charges plus a fixed amount, Estimated Charges plus a percentage, or simply the Estimated Charge.
10. Minimum Deposit: A minimum deposit amount can be set for each location. This minimum deposit will be enforced on all contracts opened at the particular location.
11. Enhanced Foreign Vehicle Processing: You can now define the drop status for vehicles dropped at foreign locations, and a new report (Foreign Drop Report) has been added. The report shows owned vehicles dropped at foreign locations and foreign vehicles rented to other foreign locations.
12. Location Performance Report: Utilization can now be calculated using Actual Days instead of Revenue Days. No-show charges can also now be included.
13. Shortcut Keys to Tool Bars: The Counter toolbar buttons now have shortcut keys to make navigating between screens quicker. Right-click or press **F12** to bring up a popup menu that lists all of the screens to which you can go. The "Tips" also show all the shortcut keys.
14. Like-Kind Exchange: If you are using PriceWaterhouseCooper's Like-Kind Exchange program, you can export your vehicle data to send to their system.
15. Monthly PAC Report: This report shows the total charges, by class, for each of the four standard coverages. Commissions to be paid to each company that provides these coverages can be entered at run time. Most companies pay PAC, Inc. (for whom this report was written) for PAC coverage.
16. Reynolds & Reynolds Original (One-Way) Interface: Reynolds has successfully tested the original interface with their windows-based ERA2 platform.
17. Reynolds & Reynolds Performance Path Interface: If multiple customers exist in the ERA system, they also now exist in RentWorks.
18. ADP Interface: The following enhancements have been made: a) If multiple customers exist in the ADP system, they also now exist in RentWorks, b), the ability to post by location to separate groups and companies has been added, c) RentWorks now supports manually-entered ADP customer IDs, d) the user can now define which field in

- RentWorks is to be used as the control number for the journal entry, e) the user can now set control numbers individually for each General Ledger account.
19. NetRent users may now receive via email certain reports in Comma Separated Value (CSV) format for importing into Excel spreadsheets.
  20. Keyboards with Integrated credit card readers have been successfully programmed and tested.