

.....

Bluebird Auto Rental Systems
700 Lanidex Plaza
Parsippany NJ 07054
(973) 560-0085
<http://www.barsnet.com>
e-mail: barsnet@worldnet.att.net

Bluebird Auto Rental Systems



Release Letter

The New Wave in Auto Rental Software

Version 2.0
September 1, 1998

TABLE OF CONTENTS

Section	Page
Deliverables	2
New Features	3
New Modules	11
Credit Card Processing	
New Reports	12
Warnings and Cautions	13

With the addition of all the new features in version 2.0, AutoMate2 has truly become a fully featured product capable of managing any sized rental operation. The developers and support staff at BARS have worked hard to bring you superior products that leverage today's technology and we will continue to do so. We hope you enjoy using them.

DELIVERABLES

The following items should constitute your upgrade order for version 2.0. Once they have been received and installed, be sure to store them in a safe place.

- AutoMate2 is delivered on a “read only” Compact Diskette.
- Version 2.0 requires Progress version 8.2, also delivered on a CD. A green sheet with all of the necessary serial numbers should accompany this.
- The 2.0 User Guide should also accompany the above items. Additional copies may be purchased for \$100 each.

New Features

- ❑ All date fields are now four digit for year 2000 compliance. With the use of the -yy startup parameter, users can use just a two digit year for data entry
- ❑ Field level security has been added to all reservation, rental and check-in programs as well as fleet
- ❑ Main menu now has icons used to shortcut to the rental related programs
- ❑ The main menu title bar text is now customizable
- ❑ Daily and flat taxes are now supported
- ❑ Turndown codes are now stored and tracked for customers not completing a reservation
- ❑ Non-Revenue Movement of vehicles can now be captured
- ❑ Gas tank levels at check-in can optionally be retained for next rental
- ❑ Vehicle class codes now have a default gas tank size to eliminate cars being entered with no gas tank size
- ❑ Fleet records now support a fuel type
- ❑ VIN verification is now supported
- ❑ A pending renter program has been added to allow for pre-preparation of rental agreements
- ❑ A Lost & Found table has been added to record items left in vehicles
- ❑ Insurance replacement screen has been modified to support dealer rentals as well
- ❑ An extension screen has been added to the insurance replacement screen for tracking extensions
- ❑ Phone number format, social security number format and zip code format are now all functional
- ❑ Status Modify has been changed to allow the user to type in the unit number of the vehicle to be modified

- ❑ A new program to enter on-order vehicles has been added. It is used to calculate projected utilization and availability
- ❑ A new program has been added to sell vehicles
- ❑ Sold vehicles are now moved out of the active fleet into a separate table
- ❑ Foreign vehicles can now be entered into the system
- ❑ Vehicle check-in status is now customizable
- ❑ Cash drawer processing has been added. All receipts are recorded in the cash drawer regardless of pay type. There is also provision for petty cash items to be recorded, as well as cash drops.
- ❑ Miscellaneous cash transactions are now supported
- ❑ Expanded employee file holds employee rate of pay, review date and driver's license details
- ❑ The database purge has been modified to write condensed contract, fleet and transaction information to archive files in MS Excel or ASCII text format. These files can then be saved on removable media.
- ❑ The Thrifty Corporate Discount file is now supported, along with the ability to process BlueChip customers.

The updated "Sales" screen:

RA#: 200003 Status: Closed Reserved Class:

Rental Info

Loc Out: Main Date: 08/24/1998 8.16
 Due Loc: Main Date: 08/25/1998 8.16

Rate Info

Rate Plan: Tour: Rate Code: Cheap Cheap Rate
 Upgrade: 0.00 Disc%: 0.0

Vehicle Info

Product: Vehicles Class: Econ Unit#: 1010
 Odometer: 15 Rented As: Econ Exchanges

Fuel Level: 8 / 8ths
 Prepaid Fuel:
 None
 Full Tank
 3/4 Tank
 1/2 Tank
 1/4 Tank

CDW
 SLI
 PAI
 PEC

Rate	Description	Rate	Time	Units	Type	OVP	Limit	Free Mi.
	Cheap: Monthly	825.00	30 Days	Reg	yes	0.00	3,000	
	Cheap: Weekly	250.00	7 Days	Reg	yes	0.00	700	
	Cheap: Daily	40.00	1 Days	Reg	yes	0.00	100	
	Cheap: Hourly	12.50	1 Hours	OT	yes	0.00	0	

Payment/Deposit Info

Pay Type: AX CC#: 31258977441125 Exp: 08/06/2001
 Amount: 44.40 Paid Deposit Auth#: 12345 Est Charges:

Charges Cust Notes Update Cancel Deposits Tour Rules Options

Date due

- ❑ Check-out and due-back date fields now support a calendar lookup
- ❑ Prepaid gas can now be sold by quarter of a tank
- ❑ A new table has been added for Tour Operators. The rental and check-in programs have been modified to support tour vouchers and split charges
- ❑ Estimated charges are calculated on the fly so the user does not have to access the charges screen
- ❑ Cash receipts from direct bill customers can now be entered in batch entry form

The updated "Customer" screen:

Customer Information - Contract Modify

RA#: 200003 Res Number: []

Search By
 Local Corporate

Phone: (908) 555-1212 Company: [] VIP #: []

Name & Address Info

Last Name: Jones First: Janice Clear

Address: 1902 Abraham Drive

City: Stewartsville St: NJ Zip: 08886 Country: USA

Other Info

DL#: J654646874841 St: NJ Exp: 08/06/2000 DOB: 08/06/1960

SSN: 123-45-6789 Local Address: [] Phone: [] - []

Employer: Morristown Memorial Hospital Phone: (973) 555-4545 Ext: []

Ins. Co.: [] Policy Number: [] Gender: []

Source/Referral Info

Source: Hotel Referral: Ramada Agent: Danny

Del/PU - No Add Drvr Sales Notes Update Cancel Ereq Flyer Employer Ins/Shop

Display Sales screen

- ❑ The check-out process has been modified to support searches by phone number, local company, corporate company, VIP number or name
- ❑ Credit card swipe will attempt to match the card with a renter record
- ❑ Binocular icons have been added for each lookup field
- ❑ Automatic zip code lookup has been added to the rental process
- ❑ Source code and referrals has been moved to the customer screen
- ❑ Source referrals can now be added on the fly during rental
- ❑ Pick-up and delivery details can be accessed from the customer screen
- ❑ Defaulting customer preferences from previous rentals is now customizable

The new "Rates" screen:

- ❑ Time & Mileage rates now support any length rate period (1 day, 3 day, 21 day etc.), cut-off times, multiple fallback rates, overtime limits and slot rates
- ❑ Rate rules have been split from the rate record to allow easier set up of rates and greater flexibility
- ❑ Projected utilization is now used to control rate availability. The system checks on-order vehicles, active fleet, projected out of service dates, current contracts and reservations to determine utilization. The user can apply utilization limits to any rate
- ❑ A Special Events table has been added to override projected utilization for known busy periods

The "Revenue Splits Matrix" screen:

Matrix Name:

Split Type: Away From
 Back To
 Local
 One-Way
 Towards

Renting: Owning: Check-In:

Charge Type	Code	Renting %	Owning %	CheckIn %	Total %
T&M		100.0	0.0	0.0	100.0
Fuel		0.0	0.0	100.0	100.0
Misc Default		100.0	0.0	0.0	100.0
Misc. Chg.	CS	100.0	0.0	0.0	100.0
Misc. Chg.	Phone	100.0	0.0	0.0	100.0
CDW		100.0	0.0	0.0	100.0
PAC		100.0	0.0	0.0	100.0
PEC		100.0	0.0	0.0	100.0
SLI		100.0	0.0	0.0	100.0
AD		100.0	0.0	0.0	100.0
UD		100.0	0.0	0.0	100.0

Buttons: Lookup, Previous, Next, Add, Update, Done, Delete, Cancel

Choose this option to update and save this record

- ❑ Revenue split matrices have been added to calculate and post one-way rentals
- ❑ A foreign vehicle inquiry program has been added to view foreign cars by owning city

The "Foreign Contract" screen

The screenshot displays the 'Foreign Rental' software interface, which is organized into three main sections: Rental Information, Customer Information, and Charges.

Rental Information: This section contains fields for RA # (123456), Unit # (9002), and License #. It also includes 'Out' and 'In' sections with dropdown menus for location (Foreign1 and Main) and date/time fields (08/28/1998 11.00 and 08/31/1998 11.00). Odometer readings are shown as 2,356 and 2,589. Gas usage is indicated by two vertical sliders for Gas Out (8/8) and Gas In (6/8).

Customer Information: This section includes fields for Last Name (Jones), First Name (Phil), Home Phone (973 984-1014), DL Number (J254684964615), DL State (NJ), and Work Phone (973 984-6655).

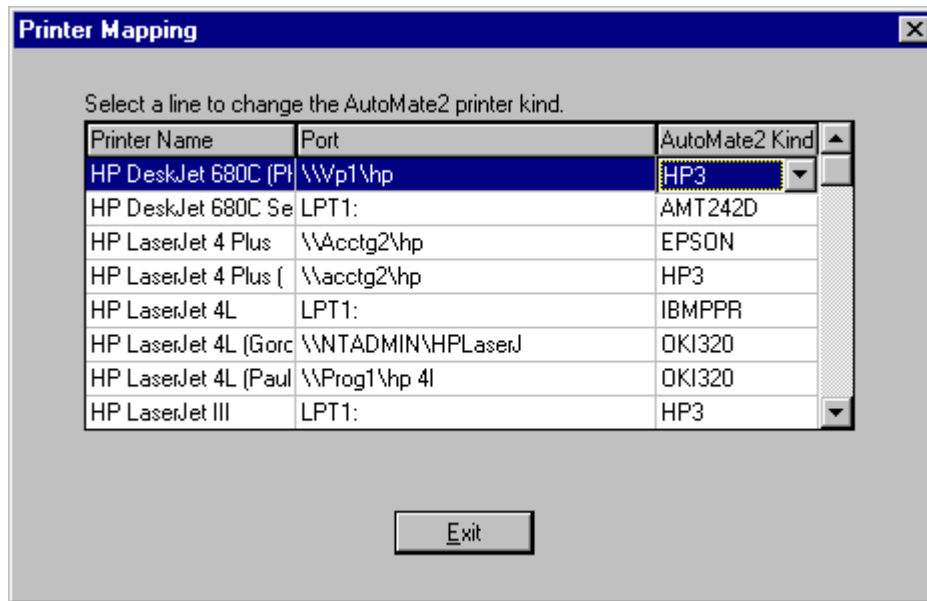
Charges: This section features a table for 'Misc. Charges' and 'Fees & Taxes', a 'Gas Charges' field, and a 'Total Charges' field. The table lists 'CDW' (36.00) and 'SaleTax' (10.26). The 'Gas Charges' field is set to 0.0 gallons. The 'Total Charges' field shows 181.26. A vertical stack of buttons on the right includes 'Rev Split', 'DBR', 'Payments', 'Notes', 'Update', and 'Cancel'.

Misc. Charges	Type	Code	Charge
Fees & Taxes:	CDW		36.00
	SaleTax		10.26

Unit #

- ❑ Contracts originating at foreign cities can be easily entered into the system.

The "Printer Mapping" screen:



- Printer mapping is now supported for all network printers
- Users can define separate contract and report printers

New Modules

Credit card swipes and electronic draft capture of funds are now supported as an add-on module.

Bluebird Auto Rental Systems has partnered with Southern DataComm, Inc., based in Clearwater, Florida. Southern DataComm is a leader in this field and can provide rental companies with a choice of over 80 processors worldwide for their credit card business. AutoMate2 will pass authorization requests to Southern DataComm's *Protobase* software, which will then pass the request to the processor.

Both AutoMate2 and Protobase will reside on the same server, eliminating the need for additional servers. Bluebird believes this will provide the most cost-effective yet flexible credit card processing solution to our customers.

New Reports and Inquiries

- ❑ A credit card inquiry program has been added to allow users to find rejected credit card items by card number
- ❑ The Daily Business Report has been modified to handle posting entries for one-way rentals and a reconciliation page has been added
- ❑ A fleet utilization report has been added which will allow the user to see current as well as projected utilization
- ❑ A commission report has been added for the check-out rental agents
- ❑ The reservation report has been completely re-written to give the user more information
- ❑ A cash drawer report has been added which will list all changes and deletions automatically upon balancing out
- ❑ A lost & found report has been added
- ❑ The net revenue report lists vehicle revenue less depreciation costs and repair costs
- ❑ The turndown report lists incomplete reservations by turndown code
- ❑ A rate exception report has been added to list all contracts where the rate on the contract does not match the reserved rate
- ❑ List reports have been added for employees, source referrals, revenue split matrices, rate rules, special events, and invoice/receipt messages
- ❑ Key financial reports are exportable to MS Excel and other spreadsheet programs

WARNINGS AND CAUTIONS

1. Character/Text Terminals

Starting with this release, AutoMate2 will no longer support character text terminals, such as the Wyse 50. Only a Graphical User Interface (GUI) will be available. Therefore, all users must have PCs or Windows Terminals, such as the Wyse WinTerm Thin Clients. However, the *database* can reside on any type of server and operating system, therefore allowing AutoMate2 to remain truly “platform independent”.

2. Back-Up of Data and Programs

As with any update to your system, you should take care to back up all of your data and programs *before* attempting an upgrade to a new release. This will ensure that you can restore the system to its original configuration, should problems occur during the update process. *Do not start the update without a full system back-up.*

3. Progress License

The 2.0 Release of AutoMate2 requires Progress version 8.2. The database, server, and client licenses should all have this 32-bit version of Progress. If you have hot-line support/software subscription, you will only have to pay the upgrade fee. If not, you will have to re-purchase all new Progress licenses.

4. Communication Software for Support

Before attempting to install the upgrade, please ensure that one of the following communication software packages are installed *and working*:

- *Carbon Copy*
- *PCAnywhere*
- *ProComm Plus 32*

5. Time Frame

As AutoMate2 is a true Client/Server application, you will need to update the programs on all of the PCs. During the update process, all users will have to be logged out of the AutoMate2 application. Depending on the amount of data to be converted, the entire process can take several hours.

6. Operating Systems

The following operating systems will support version 2.0. Please keep in mind that this is *not* an inclusive list:

- Windows NT 4.0 Terminal Server
- Windows NT 4.0
- Windows NT 3.51
- Windows 95
- Windows 98
- Citrix Winframe 1.7
- Citrix Metaframe